

- 3.5" Color Display
- Fully Configurable
- Simple Integration
- Rugged Tactile Buttons
- 24-bit Backlit LED's

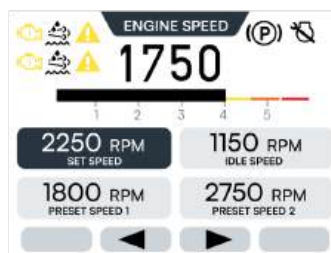


RUGGED, COMPACT, CONFIGURABLE AND PROGRAMMABLE

An entry level display and a worthy successor to the legendary PV101. It is designed to provide electronic instrumentation and application monitoring for electronic or mechanical engine/battery/mains powered industrial equipment. This display offers robust features with a color LCD, tactile buttons, and outdoor usability.

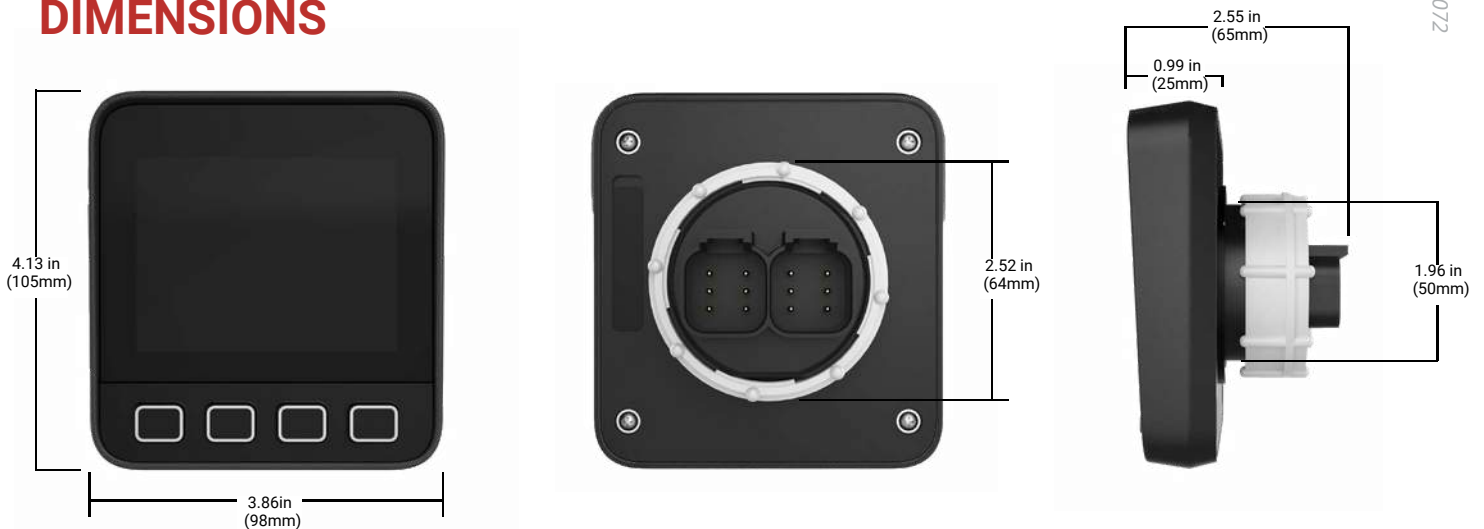
The display is versatile and can be used to provide operator equipment status, fault -conditions, and the ability to monitor configurable parameters. It features support for CAN J1939 & CAN Open in addition to RS485 serial communication to easily integrate into a wide variety of applications.

The display will come out of the box as a fully functional engine monitoring instrument paired with a configurable software application for quick customization of parameters, color schemes and company logos. Support for multiple languages and datalogging is also included.



S35

DIMENSIONS



SPECIFICATIONS

COMPUTING

PROCESSOR	Arm® Cortex®-M33 microcontroller @ 160 MHz (32-bit)
OPERATING SYSTEM	Free RTOS
STORAGE	1 MB Flash Memory
RAM	320 KB SRAM
GRAPHICS	Integrated Graphics Controller

DISPLAY/HMI

SCREEN	3.5-Inch Square, 24bit color
RESOLUTION	320 x 240 QVGA
CONTRAST RATIO / BRIGHTNESS	800 NITS
TOUCH PANEL	4 – Tactile Silicon buttons
SURFACE	Anti-glare finish

COMPLIANCE

EMC/EMI	ISO 13766, ISO 14982
CE	Yes Yes Yes
REACH	
ROHS	

INTERFACES

CAN USB	(1) CAN 2.0B according to ISO 11898-2, J1939 (Selectable 250k/500k/1Mb baud rate)
RS485	(1) USB-C 2.0B full speed host
INPUTS	(1) HALF DUPLEX
OUTPUTS	(2) Analog (0-5V, 4-20ma, Resistive)
REAL TIME CLOCK	(1) Freq In (30Hz – 10KHz) (2) Digital Low-side open drain 500mA
	Yes

ELECTRICAL/ENVIRONMENTAL

OPERATING VOLTAGE	6 - 36 VDC, Reverse polarity protected
OPERATING TEMP.	-40°C to +85°C (-40°F to +185°F) -40°C
STORAGE TEMP.	to +85°C (-40°F to +185°F) IP67 7.86
PROTECTION	Grms (5-2000 Hz), 3-axis random ±50G,
VIBRATION	3-axis
SHOCK	

PHYSICAL

MOUNTING	2" SAE HOLE with ring nut
CONNECTORS	(2) 6-pin Deutsch DT06-6 Connectors

⚠ WARNING: This product can expose you to chemicals including lead, which is known to the State of California to cause cancer. For more information, go to www.P65Warnings.ca.gov.

FOR MODEL & PART INFORMATION

FOR MANUAL & SUPPORT DOCUMENTS

FOR SUPPORT & WARRANTY

<https://rajkotmarine.com/enovation.html>

<https://rajkotmarine.com/enovation.html>

<https://rajkotmarine.com/enovation.html>

SALES CONTACT

CONTACT

✉ sales@rajkotmarinelc.ae
 ☎ +971 6 7487580
 🌐 www.rajkotmarine.com

RAJKOT MARINE LLC

Jerf Industrial Area 1,
 P.O Box 5861
 Ajman, UAE

